

TRUCK CRANE ZTC1000



ZOOMLION

ZOOMLION

Zoomlion Heavy Industry Science & Technology Co., Ltd.
Add: No. 677 LuGu Road Zoomlion Industrial Park Changsha, Hunan, China, 410205

Copyright © 2017 Zoomlion. All rights reserved. Reproduction and copying of any part of the Contents is not allowed for any purposes without Zoomlion's written approval.
Please the product loading experience shall be subject to sample.



2.1 Highlights:

- 1, This high-tech product, combining mechanical, electrical and hydraulic systems as a whole, has so many advantages, such as good control performance, excellent mirco-positioning performance, great lifting capacity and super lifting height.
- 2, The 5-axle chassis with 6-section main boom 63m, total lifting height with jib reaches 82.5m, with additional extension jib, lifting height can reach 90.5m.
- 3, The latest electro-hydraulic proportional directional control valve with load sensing function ensures that each mechanism makes full use of its movement efficiently.
- 4, Fully equipped with safety devices, such as relief valve, balance valve and electronically safety devices, enable your stuff and machines safety.



2.2 Technical data

Item		Value	Remarks
Work performance	Max. rated lifting capacity	kg 100000	At 3 m radius
	Max. load moment of basic boom	kN.m 4000	At 5 m radius
	Max. load moment of main boom (fully extended)	kN.m 1860	At 30 m radius
	Max. lifting height of basic boom	m 14.0	
	Max. lifting height of main boom	m 64.0	The parameters do not include deflection of main boom and jib. The value in the brackets is the value with the extension installed.
	Max. lifting height of jib	m 82.5 / (90.5)	
Work speeds	Max. hoist rope speed (Main winch)	m/min. 110	At the 5th layer
	Max. hoist rope speed (Auxiliary winch)	m/min. 75	At the 3rd layer
	Boom derricking up time	s 70	
	Boom extending time	s 13	
	Max. slewing speed	r/min. 1.5	
Driving	Max. height above sea level	m 2000	
	Max. driving speed	km/h 75	
	Max. gradeability	% 40	
	Min. turning diameter	m ≤23	
	Min. ground clearance	mm 300	
	Limits for exhaust pollutants and smoke	Conform to related standards	GB3847-2005 GB17691-2005 (National Stage II)
Mass	Fuel consumption per hundred kilometers	L 70	
	Deadweight in driving condition	kg 58400	
	Complete vehicle kerb mass	kg 58205	
	Load on axles 1 and 2	kg 10800/10800	
Dimensions	Load on axles 4 and 5	kg 26000 (dual-axle) /10800	
	Overall dimensions (L × W × H)	mm 15400×3000×3950	
	Outrigger spread (L)	m 8.05	
	Outrigger spread (W)	m 7.6 (fully extended), 5.4 (intermediately extended)	
	Main boom length	m 13.5~63.0	
	Boom angle	° -0.5~82	
	Jib length	m 11、18.6	
	Jib + extension length	m 26.6	
	Offset	m 0、30	

2.3 Lifting capacity tables

Unit: Metric tons																				
Outriggers fully extended, with 32 tons counterweight, over full range																				
Radius [m]	13.5	18	22.5	27	31.5	36	40.5	45	49.5	54	58.5	63	Radius [m]							
3.0	100	85	75	65									3.0							
3.5	92	82	73	65	54								3.5							
4.0	88	79	71	65	54								4.0							
4.5	84	76	69	64	54	43							4.5							
5.0	80	73	66	62	54	42.5							5.0							
5.5	72	70	63	59.5	52	41.5	34						5.5							
6.0	65	65	60	57	50	40	34						6.0							
6.5	59	58	57	54	49	38.5	33	25					6.5							
7.0	54	53	52	52	47	37.5	32	25					7.0							
8.0	46	46.55	45	45.5	43.5	35	29.5	25	20				8.0							
9.0	40	40	39.5	40	40	32.5	27.5	24	19.5				9.0							
10.0		35.5	35	35.5	36	30.5	25.5	22.8	19	16			10.0							
11.0		32	31.5	32	32.5	28.5	24.2	21.5	18.5	15.5	12		11.0							
12.0		29	28.5	29	29.5	27	23	20.2	18	15	11.5	10	12.0							
14.0			22.5	23.5	24.5	24	20	17.8	16.4	14.3	11	9.6	14.0							
16.0			18	19	20	20.5	17.9	16	14.7	13.2	10.5	9.3	16.0							
18.0			15.5	16.5	17	15.9	14.5	13.2	12	10	9	18.0								
20.0			13	14	14.5	14.2	13	12	11	9.6	8.6	20.0								
22.0				12	12.5	12.2	11.7	10.8	10	9	8	22.0								
24.0					10.2	10.7	10.5	10.6	9.8	9.2	8.3	7.5	24.0							
26.0						9.2	9	9.1	8.9	8.4	7.7	7	26.0							
28.0							8	7.8	7.9	8.1	7.7	7.2	28.0							
30.0								7	6.8	6.9	7.2	7	30.0							
32.0									5.9	6	6.3	6.4	32.0							
34.0										5.1	5.2	5.5	34.0							
36.0											4.5	4.8	36.0							
38.0												3.9	38.0							
40.0													3.6	40.0						
42.0														3.1	42.0					
44.0															3	44.0				
46.0																2.6	46.0			
48.0																	2.5	48.0		
50.0																		2.2	50.0	
52.0																			2	52.0
Reeving	14	12	10	8	7	5	4	3	3	2	2	2	2	Reeving						
Hook	90 T													Hook						
Telescoping mode	I	1	1	2	2	2	2	3	3	3	3	3	4	I						
II	1	2	2	2	2	2	2	3	3	3	3	4	II							
III	1	1	1	2	2	2	2	2	3	3	3	4	III							
IV	1	1	1	1	2	2	2	2	2	3	3	4	IV							
V	1	1	1	1	1	2	2	2	2	2	3	4	V							

Unit: Metric tons																							
Outriggers fully extended, with 28 tons counterweight, over full range																							
Radius [m]	Boom length [m]													Radius [m]									
3.0	100	85	75	65										3.0									
3.5	92	82	73	65	54									3.5									
4.0	88	79	71	65	54									4.0									
4.5	84	76	69	64	54	43								4.5									
5.0	80	73	66	62	54	42.5								5.0									
5.5	72	70	63	59.5	52	41.5	34							5.5									
6.0	63	62	60	57	50	40	34							6.0									
6.5	57	56	57	54	49	38.5	33	25						6.5									
7.0	52	51	50	52	47	37.5	32	25	20					7.0									
8.0	44	43.5	43	45.5	43.5	35	29.5	25	17	17.5				8.0									
9.0	38	38	37.5	39	40	32.5	27.5	24	19.5					9.0									
10.0		34	33.5	34.5	35	30.5	25.5	22.8	19	16				10.0									
11.0		30.5	30	31	31.5	28.5	24.2	21.5	18.5	15.5	12			11.0									
12.0		27.5	27	28	28.5	27	23	20.2	18	15	11.5	10		12.0									
14.0			21	21.5	22.5	23.5	20	17.8	16.4	14.3	11	9.6	14.0										
16.0				16.5	17	18	19	17.5	16	14.7	13.2	10.5	9.3	16.0									
18.0					14	15	15.7	15.3	14.5	13.2	12	10	9	18.0									
20.0						11.5	12.5	13.2	12.7	12.8	12	11	9.6	20.0									
22.0							10.5	11.2	10.7	10.8	10.8	10	9	22.0									
24.0								9	9.5	9.2	9.3	9.6	9.2	24.0									
26.0									8.4	7.9	8	8.1	8.4	26.0									
28.0										7.2	6.7	6.8	7.2	28.0									
30.0											6.2	5.8	6.1	30.0									
32.0												5	5	32.0									
34.0													4.2	34.0									
36.0														3.7	36.0								
38.0															3.1	38.0							
40.0																2.8	40.0						
42.0																	2.4	42.0					
44.0																		2.3	44.0				
46.0																			1.9	46.0			
48.0																				1.9	48.0		
50.0																					1.6	50.0	
52.0																						1.4	52.0
Reeving	14	12	10	8	7	5	4	3	3	3	2	2	2	Reeving									
Hook	90 T													Hook									
Telescoping mode	I	1	1	2	2	2	2	3	3	3	3	3	4	I									
II	1	2	2	2	2	2	2	2	3	3	3	3	4	II									
III	1	1	1	2	2	2	2	2	2	3	3	3	4	III									
IV	1	1	1	1	2	2	2	2	2	2	2	3	4	IV									
V	1	1	1	1	1	2	2	2	2	2	2	3	4	V									

Outriggers fully extended, with 20 tons counterweight, over full range																							
Radius [m]	Boom length [m]													Radius [m]									
	13.5	18	22.5	27	31.5	36	40.5	45	49.5	54	58.5	63											
3.0	100	85	75	65										3.0									
3.5	92	82	73	65	54									3.5									
4.0	88	79	71	65	54									4.0									
4.5	84	76	69	64	54	43								4.5									
5.0	80	73	66	62	54	42.5								5.0									
5.5	72	70	63	59.5	52	41.5	34							5.5									
6.0	58	58	58	57	50	40	34							6.0									
6.5	53	53	53	52	49	38.5	33	25						6.5									
7.0	48	48	48	48	47	37.5	32	25						7.0									
8.0	40	40	40	40	42	35	29.5	25	20					8.0									
9.0	34	34	34	35	37	32.5	27.5	24	19.5					9.0									
10.0		31	31.5	32	33	30.5	25.5	22.8	19	16				10.0									
11.0			27	27	27	28	28.5	24.2	21.5	18.5	15.5	12		11.0									
12.0			23.5	23	23.5	24.5	25.5	23	20.2	18	15	11.5	10	12.0									
14.0				17	18	19	19.5	19	17.8	16.4	14.3	11	9.6	14.0									
16.0					13.5	14	15	16	15.5	15.5	14.7	13.2	10.5	9.3	16.0								
18.0						11.5	12	13	12.5	13	12	10	9	18.0									
20.0							9.5	10	10.6	10.4	10.7	10.8	9.6	8.6	20.0								
22.0								8.5	9	8.7	8.7	9	9.4	9	8	22.0							
24.0									7	7.7	7.3	7.6	8	8.3	7.5	24.0							
26.0										6.6	6.1	6.4	6.8	7.1	7	26.0							
28.0											5.6	5.2	5.4	5.8	6.2	6.2	28.0						
30.0												4.7	4.3	4.4	4.6	5	30.0						
32.0													3.6	3.7	3.9	4.2	32.0						
34														3	3.3	3.6	3.9	34.0					
36.0															2.5	2.7	3	34	36.0				
38.0																1.9	2.2	2.5	29	38.0			
40.0																	1.7	2	2.4	24	40.0		
42.0																		1.3	1.6	2	2	42.0	
44.0																			1.2	1.6	1.6	1.6	44.0
46.0																				1.3	1.3	1.4	46.0
48.0																							48.0
Reeling Hook	16	12	10	8	7	5	4	3	3	3	2	2								Reeling Hook			
T	1	1	2	2	2	2	2	2	2	2	2	2	2	2	2	2	2	2	2	2	2	2	2
I	1	1	2	2	2	2	2	2	2	2	2	2	2	2	2	2	2	2	2	2	2	2	2
II	1	1	1	2	2	2	2	2	2	2	2	2	2	2	2	2	2	2	2	2	2	2	2
III	1	1	1	1	2	2	2	2	2	2	2	2	2	2	2	2	2	2	2	2	2	2	2
IV	1	1	1	1	1	2	2	2	2	2	2	2	2	2	2	2	2	2	2	2	2	2	2
V	1	1	1	1	1	1	2	2	2	2	2	2	2	2	2	2	2	2	2	2	2	2	2

2.3 Lifting capacity tables

Table 5Unit: Metric tons

Radius [m]	Outriggers fully extended, with 0 tons counterweight, over full range												Radius [m]		
	Boom length [m]														
	13.5	18	22.5	27	31.5	36	40.5	45	49.5	54	58.5	63			
3.0	100	85	75	65									3.0		
3.5	92	82	73	65	54								3.5		
4.0	88	79	71	65	54								4.0		
4.5	84	76	69	64	54	43							4.5		
5.0	80	60	59	59	54	42.5							5.0		
5.5	53	53	53	53	52	41.5	34						5.5		
6.0	47	47	47	47	47	40	34						6.0		
6.5	41	41	41	42	43	38.5	33	25					6.5		
7.0	35	35	35	36	37	37	32	25					7.0		
8.0	27	27	26	27	28	29	29	25	20				8.0		
9.0	21	21	20	21	22	23	23	22	19				9.0		
10.0		17	16	17	18	19	18	18	16				10.0		
11.0		14	13	14	15	16	15	15	15	12			11.0		
12.0		11	10.5	11.5	12.5	13.5	13	13	13	11	10	12.0			
14.0			7.4	8.1	9	9.5	9.3	9.3	9.5	10	10	9	14.0		
16.0				5	5.7	6.5	7.4	6.8	6.8	7	7.5	8	16.0		
18.0					4	4.7	5.6	5	5	5.2	5.6	6.1	18.0		
20.0						2.6	3.4	4.2	3.6	3.6	3.9	4.3	4.7	20.0	
22.0							2.3	3.1	2.6	2.6	2.8	3.2	3.6	22.0	
24.0								1.5	2.2	1.7	1.7	2	2.3	2.7	24.0
26.0									1.5	1	1	1.2	1.6	2	26.0
28.0													1.4	1.4	28.0
Reving	14	12	10	8	7	5	4	3	3	2	2	2	Reving		
Hook			90T				70T				25T		Hook		
I	I	1	2	2	2	2	2	3	3	3	3	3	4	I	
II	II	1	2	2	2	2	2	2	3	3	3	3	4	II	
III	III	1	1	2	2	2	2	2	2	3	3	3	4	III	
IV	IV	1	1	1	2	2	2	2	2	2	3	3	4	IV	
V	V	1	1	1	1	2	2	2	2	2	2	3	4	V	

Table 6Unit: Metric tons

Radius [m]	Outriggers intermediately extended, with 32 tons counterweight, over full range												Radius [m]				
	Boom length [m]																
	13.5	18	22.5	27	31.5	36	40.5	45	49.5	54	58.5	63					
3.0	100	85	75	65									3.0				
3.5	92	82	73	65	54								3.5				
4.0	88	79	71	65	54	43							4.0				
4.5	84	76	69	64	54								4.5				
5.0	80	73	66	62	54	42.5							5.0				
5.5	72	70	63	59.5	52	41.5	34						5.5				
6.0	65	64	60	57	50	40	34						6.0				
6.5	59	58	57	54	49	38.5	33	25					6.5				
7.0	54	53	52	52	47	37.5	32	25					7.0				
8.0	44	44	43	44	43	35	29.5	25	20				8.0				
9.0	36	36	35	36	37	32.5	27.5	24	19.5				9.0				
10.0		30	29	30	31	30.5	25.5	22.8	19	16			10.0				
11.0		25.5	25	26	26.5	27.6	24.2	21.5	18.5	15.5	12		11.0				
12.0		22	21	22	23	24	23	20.2	18	15	11.5	10	12.0				
14.0			16	17	17.8	18.5	18	17.8	16.4	14.3	11	9.6	14.0				
16.0				13	13.5	14	15	14.5	14.5	14	13.2	10.5	9.3	16.0			
18.0					11	11.5	12.2	11.8	11.8	12	12	10	9	18.0			
20.0						9	9.5	10.3	9.7	9.8	10	10.5	9.6	8.6	20.0		
22.0							8	8.6	8.3	8.4	8.5	9	9	8	22.0		
24.0								6.6	7.4	7	7	7.2	7.5	7.5	24.0		
26.0									6.3	5.8	5.8	6.1	6.5	7	26.0		
28.0									5.3	4.9	5	5.2	5.5	6	28.0		
30.0									4.4	4.1	4.1	4.4	4.7	5.1	30.0		
32.0										3.4	3.4	3.7	4	4.4	32.0		
34.0										2.7	2.8	3	3.4	3.8	34.0		
36.0											2.2	2.5	2.8	3.2	36.0		
38.0											1.7	2	2.3	2.7	38.0		
40.0												1.6	1.9	2.3	40.0		
42.0													1.1	1.5	1.9	42.0	
44.0														1.1	1.5	44.0	
46.0															1.2	1.2	46.0
Reving	14	12	10	8	7	5	4	3	3	2	2	2	Reving				
Hook			90T				70T				25T		Hook				
I	I	1	1	2	2	2	2	3	3	3	3	3	4	I			
II	II	1	2	2	2	2	2	2	3	3	3	3	4	II			
III	III	1	1	1	2	2	2	2	2	3	3	3	4	III			
IV	IV	1	1	1	1	2	2	2	2	2	3	3	4	IV			
V	V	1	1	1	1	1	2	2	2	2	2	3	4	V			

Table 7Unit: Metric tons

Radius [m]	Outriggers intermediately extended, with 28 tons counterweight, over full range												Radius [m]							
	Boom length [m]																			
	13.5	18	22.5	27	31.5	36	40.5	45	49.5	54	58.5	63								
3.0	100	85	75	65									3.0							
3.5	92	82	73	65	54								3.5							
4.0	88	79	71	65	54								4.0							
4.5	84	76	69	64	54	43							4.5							
5.0	80	73	66	62	54	42.5							5.0							
5.5	72	70	63	59.5	52	41.5	34						5.5							
6.0	65	64	60	57	50	40	34						6.0							
6.5	59	58	57	54	49	38.5	33	25					6.5							
7.0	50	50	50	50	47	37.5	32	25					7.0							
8.0	40	40	39	40	41	35	29.5	25	20				8.0							
9.0	32	32	31	32	33	32	27.5	24	19.5				9.0							
10.0		27	26	27	28	29	25.5	22.8	19	16			10.0							
11.0		23	22	23	24	25	24	21.5	18.5	15.5	12		11.0							
12.0		20	19	20	21	22	21	20	18	15	11.5	10	12.0							
14.0				14.5	15	16	17	16.5	16.5	16	14.3	11	9.6	14.0						
16.0					11.5	12	12.5	13.5	13	13	13.2	10.5	9.3	16.0						
18.0						9.5	10	10.8	10.5	10.5	11	11.5	10	9	18.0					
20.0							7.8	8.5	9.2	8.8	8.8	9	9.3	9.5	8.6	20.0				
22.0								7	7.7	7.3	7.3	7.5	8	8.3	8	22.0				
24.0									5.8	6.4	6	6.1	6.3	6.7	7	24.0				
26.0										5.4	5	5	5.2	5.6	6	26.0				
28.0										4.5	4.1	4.2	4.4	4.7	5.2	28.0				
30.0											3.4	3.4	3.6	4	4.4	30.0				
32.0												2.7	2.8	3	3.3	3.7	32.0			
34.0													2.2	2.4	2.7	3.1	3.1	34.0		
36.0														1.6	1.8	2.2	2.6	2.6	36.0	
38.0															1.4	1.8	2.2	2.2	38.0	
40.0																1	1.3	1.7	1.7	40.0
42.0																	1.4	1.4	42.0	
44.0																		1	1	44.0
Reving	14	12	10	8	7	5	4	3	3	2	2	2	Reving							
Hook			90T				70T				25T		Hook							
I	I	1	1	2	2	2	2	3	3	3	3	3	I							
II	II	1	2	2	2	2	2	2	3	3	3	3	4	II						
III	III	1	1	1	2	2	2	2	2	3	3	3	4	III						
IV	IV	1	1	1	1	2	2	2	2	2	3	3	4	IV						
V	V	1	1	1	1	1	2	2	2	2	2	3	4	V						

Table 8Unit: Metric tons

Radius [m]	Outriggers intermediately extended, with 20 tons counterweight, over full range												Radius [m]
	Boom length [m]												
	13.5	18	22.5	27	31.5	36	40.5	45	49.5	54	58.5	63	
3.0	100	85	75	65									3.0
3.5	92	82	73	65	54								3.5
4.0	88	79	71	65	54								4.0
4.5	84	76	69	64	54	43							4.5
5.0	80	73	66	62	54	42.5							5.0
5.5	72	70	63	59.5	52	41.5	34						5.5
6.0	54	54	54	54	50	40	34						6.0
6.5	48	48	48	48	48	38.5	33	25					6.5
7.0	42	42	41	42	42	37.5	32	25					7.0
8.0	33	33	32	33	34	34.5	29.5	25	20				8.0
9.0	26.5	26.5	26	26.5	27.5	28.5	27	24	19.5				9.0
10.0	22	22	21	22	23	24	23	22	19	16			10.0
11.0	19	18	19	19.5	20.5	20	20	18.5	15.5	12			11.0
12.0	16	15	16	16.5	17.5	17	17	17.5	15	11.5	10		12.0
13.0	11	11	12	12.5	13.5	13	13	13	11	11	9.6	14	13.0
14.0	16.0	8.5	9.3	10	10.5	10	10	10.5	11	10.5	9.3	16.0	16.0
18.0		7.2	8	8.7	8.3	8.4	8.5	9	9	9	9	18.0	
20.0			5.6	6.3	7	6.6	6.7	6.9	7.3	7.8	7.8	20.0	
22.0				5	5.7	5.3	5.4	5.6	6	6.4	6.4	22.0	
24.0				4	4.7	4.3	4.3	4.5	4.8	5.3	5.3	24.0	
26.0					3.8	3.4	3.4	3.6	4	4.4	4.4	26.0	
28.0					3	2.6	2.6	2.8	3.2	3.5	3.5	28.0	
30.0					2.3	2	2	2.2	2.5	3	3	30.0	
32.0						1.6	1.6	1.6	2	2.4	2.4	32.0	
34.0							1.8	1.8	1.8	1.8	1.8	34.0	
36.0								1	1.4	1.4	1.4	36.0	
38.0									1	1	1	38.0	
Hoisting	14	12	10	8	7	5	4	3	3	2	2	2	Hoisting
Reeling			90 T										Reeling
II	1	1	2	2	2	2	3	3	3	3	3	4	II
III	1	1	2	2	2	2	2	2	3	3	3	4	III
IV	1	1	1	2	2	2	2	2	2	3	3	4	IV
V	1	1	1	1	1	2	2	2	2	2	3	4	V

2.3 Lifting capacity tables

Unit: Metric tons

Outriggers immediately extended, with a loss of counterweight, over full range													
Radius (m)	Boom length (m)												Radius (m)
	13.5	18	22.5	27	31.5	36	40.5	45	49.5	54	58.5	63	
3.0	100	85	75	65									3.0
3.5	92	82	73	65	54								3.5
4.0	88	79	71	65	54								4.0
4.5	84	76	69	64	54	43							4.5
5.0	80	73	66	62	54	42.5							5.0
5.5	72	70	63	59.5	52								5.5
6.0	66	36	34	34	34	30							6.0
6.5	30	31	30	30	30	27	25						6.5
7.0	26	26	25	25	25	23	22						7.0
8.0	20	20.5	20	21	21	19	18	17					8.0
9.0	15.5	16	15	16	17	15	15	15					9.0
10.0	13	12	13	14	13	13	13	13					10.0
11.0	10.5	10	10.5	11	12	11	11	11	11				11.0
12.0	9	8.3	9	9.3	9	9	9	9.5	9.5	9			12.0
14.0	5.5	6.3	7	7.7	7.3	7.3	7.5	8	8	8	14.0		14.0
16.0	3.6	4.3	5	5.8	5.4	5.4	5.6	6	6.3	6.3	6.3		16.0
18.0		2.8	3.6	4.3	3.8	3.8	4.1	4.5	4.8	4.8	4.8		18.0
20.0		1.7	2.5	3.2	2.7	2.7	3	3.3	3.6	3.6	3.6		20.0
22.0			1.6	2.3	1.8	1.8	2	2.3	2.6	2.6	2.6		22.0
24.0				1.5			1.3	1.6	2	2	2		24.0
26.0								1.3	1.3	1.3	1.3		26.0
Revolving	14	12	10	8	7	5	4	3	3	2	2	2	Revolving
	90 T				70 T				25 T				
Telescoping mode	I	1	1	2	2	2	2	3	3	3	3	4	I
	II	1	1	2	2	2	2	3	3	3	3	4	II
	III	1	1	2	2	2	2	2	3	3	3	4	III
	IV	1	1	2	2	2	2	2	2	3	3	4	IV
	V	1	1	1	1	1	1	2	2	2	2	3	V

Table 10 Unit: Metric tons

Outriggers fully extended, with 32 tons counterweight, over full range										
Jib length	11m				18.6m				25.6m	
Boom length	58.5m	63m	68m	58.5m	63m	68m	58.5m	63m	68m	0°
Weight	30°	30°	30°	30°	30°	30°	30°	30°	30°	0°
82"	6	4.5	5.5	4	4.5	2.5	4	2	2.5	2.2
80"	6	4.2	5.5	4	4.2	2.4	3.8	2	2.4	2
78"	6	4.1	5.5	4	4	2.3	3.6	2	2.3	2
76"	5.8	4	5.2	3.8	3.7	2.2	3.3	1.9	2.2	1.9
74"	5.6	3.9	4.8	2.5	2.5	2.2	3	1.9	2.1	1.8
72"	5.2	3.8	4.4	3.5	3.2	2	2.8	1.8	2	1.7
70"	4.8	3.7	4.2	3.4	3	1.9	2.6	1.8	1.8	1.6
68"	4.5	3.6	4	3.3	2.8	1.8	2.4	1.7	1.7	1.4
66"	4.2	3.5	3.7	3.1	2.6	1.8	2.3	1.6	1.5	1.3
64"	3.9	3.4	3.4	3	2.5	1.7	2.2	1.6	1.4	1.2
62"	3.6	3.2	3.2	2.8	2.3	1.7	2	1.5	1.3	1.1
60"	3.3	3	3	2.6	2.1	1.6	1.9	1.4	1.2	1
58"	3.2	2.8	2.8	2.5	2.1	1.6	1.7	1.4	1.1	1
56"	3	2.7	2.6	2.4	2	1.5	1.6	1.4	1.1	0.9
54"	2.8	2.6	2.4	2.2	1.9	1.5	1.5	1.3	1	1
52"	2.7	2.5	2.2	2	1.8	1.4	1.3	1.2	1	1
50"	2.5	2.3	2	1.8	1.7	1.4	1.2	1.1	1	1
48"	2.4	2.2	1.8	1.7	1.6	1.4	1.1	1	1	1
46"	2.2	2	1.6	1.6	1.5	1.3	1.1	0.9	1	1
44"	2	1.8	1.5	1.4	1.2	0.9	1	0.8	1	1
42"	1.8	1.6	1.3	1.2	1.1	1	0.8	1	1	1
40"	1.6	1.5	1.1	1	1	0.9	1	1	1	1
35"	1.2	1.1	0.9	0.8	1	1	1	1	1	1
Revolving	7 T									
Hook	7 T									
Telescoping mode	I	3	4	3	4	3	4	3	4	3
	II	3	4	3	4	3	4	3	4	3
	III	3	4	3	4	3	4	3	4	3
	IV	3	4	3	4	3	4	3	4	3
	V	3	4	3	4	3	4	3	4	3

Unit: Metric tons

Duttriggers fully extended, with 78 tons counterweight, over full range										
Hs length Boon length m ft	11m			15.6m			25.6m			
	50.5m	30"	63m	50.5m	30"	63m	50.5m	30"	63m	
82"	6	4.5	5.5	4	4.5	2.5	4	2	2.5	2.2
80"	6	4.2	5.5	4	4.2	2.4	3.8	2	2.4	2
78"	6	4.1	5.5	4	4	2.3	3.6	2	2.3	2
76"	5.8	4	5.2	3.8	3.7	2.2	3.3	1.9	2.2	1.9
74"	5.6	3.9	4.9	3.6	3.5	2.1	3.1	1.9	2.1	1.8
72"	5.2	3.8	4.4	3.5	3.2	2	2.8	1.8	2	1.7
70"	4.8	3.7	4.2	3.4	3	1.9	2.6	1.8	1.8	1.6
68"	4.5	3.6	4	3.3	2.8	1.8	2.4	1.7	1.7	1.4
66"	4.2	3.5	3.7	3.1	2.6	1.8	2.3	1.6	1.5	1.3
64"	3.9	3.4	3.4	3	2.5	1.7	2.2	1.4	1.4	1.2
62"	3.6	3.2	3.2	2.8	2.3	1.7	2	1.5	1.3	1.1
60"	3.4	3	3	2.7	2.2	1.6	1.8	1.4	1.2	1
58"	3.2	2.8	2.8	2.5	2.1	1.6	1.7	1.4	1.1	1
56"	3	2.7	2.6	2.4	2	1.5	1.6	1.4	1.1	0.9
54"	2.8	2.6	2.4	2.2	1.9	1.5	1.5	1.3	1	
52"	2.6	2.4	2	1.9	1.8	1.4	1.3	1.2	1	
50"	2.3	2.2	1.8	1.7	1.6	1.4	1.1	1		
48"	2.1	2	1.5	1.4	1.4	1.2		0.9	0.8	
46"	1.9	1.8	1.3	1.2	1.2	1.0	0.7			
44"	1.7	1.6	1.1			0.9				
42"	1.5	1.4	1	0.9	0.8					
40"	1.3	1.2	0.8	0.7	0.7					
35"		0.9	0.8							
Reeving										
Hook					7 T					
Telescoping ends	I	3	4	3	4	3	4	3	4	4
	II	3	4	3	3	3	4	3	4	4
	III	3	4	3	3	3	4	3	4	4
	IV	3	4	3	4	3	4	3	4	4
	V	3	4	3	4	3	4	3	4	4

Unit: Metric tons

Outriggers Fully extended, with 18 tons counterweight, over full range										
Jib length		11m				18.5m			26.6m	
Boom length	42m	58.5m	63m	63m	58.5m	63m	63m	58.5m	63m	
		0°	30°	45°	0°	30°	45°	0°	30°	45°
82°	6	4.5	5.5	4	4.5	2.5	4	2	2.5	2.2
80°	6	4.2	5.5	4	4.2	2.4	3.8	2	2.4	2.1
78°	6	4.1	5.5	4	4	2.3	3.6	2	2.3	2
76°	5.8	4	5.2	3.8	3.7	2.2	3.3	1.9	2.2	1.9
74°	5.6	3.9	4.8	3.6	3.5	2.1	3	1.9	2.1	1.8
72°	5.3	3.8	4.4	3.5	3.2	2	2.8	1.8	2	1.7
70°	4.8	3.7	4.2	3.4	3	1.9	2.6	1.8	1.8	1.6
68°	4.5	3.6	4	3.3	2.8	1.8	2.4	1.7	1.7	1.4
66°	4.2	3.5	3.7	3.1	2.6	1.8	2.3	1.6	1.5	1.3
64°	3.9	3.4	3.3	3	2.5	1.7	2.2	1.6	1.4	1.2
62°	3.6	3.2	2.9	2.6	2.3	1.7	2	1.5	1.3	1.1
60°	3.1	2.9	2.5	2.3	2.2	1.6	1.7	1.4	1.2	1
58°	2.7	2.5	2.1	2	1.9	1.6	1.4	1.2	1.1	
56°	2.4	2.2	1.8	1.7	1.6	1.4	1.3	1	1	
54°	2.1	1.9	1.5	1.4	1.3	1.2	1.1	0.9	0.8	
52°	1.8	1.7	1.3	1.2	1.1	1				
50°	1.5	1.4	1	0.9	0.9	0.8				
48°	1.3	1.2	0.8	0.7	0.7					
46°	1.1	1								
44°	0.9	0.8								
Reeving					1					
Hook					7 T					
Telescopic mode										
I	3	4	3	4	3	4	3	4	3	4
II	4	4	3	4	3	4	3	4	3	4
III	4	4	3	4	3	4	3	4	3	4
IV	3	4	3	4	3	4	3	4	3	4
V	3	4	3	4	3	4	3	4	3	4

2.3 Lifting capacity tables

Table 13 Unit: Metric tons

Outriggers fully extended, with 6 tons counterweight, over full range												
Jib length Boom length Angle	11m				18.6m				26.6m			
	58.5m		63m		58.5m		63m		58.5m		63m	
	0°	30°	0°	30°	0°	30°	0°	30°	0°	30°	0°	30°
82°	6	4.5	5.5	4	4.5	2.5	4	2	2.5	2.2		
80°	6	4.2	5.5	4	4.2	2.4	3.8	2	2.4	2.1		
78°	6	4.1	5.5	4	4	2.3	3.6	2	2.3	2		
76°	5.8	4	5.2	3.8	3.7	2.2	3.3	1.9	2.2	1.9		
74°	5.3	3.9	4.4	3.6	3.5	2.1	3	1.8	2.1	1.8		
72°	4.5	3.7	3.7	3	3.2	2	2.6	1.7	2	1.6		
70°	3.7	3.1	3	2.5	2.6	1.8	2	1.5	1.8	1.3		
68°	3.1	2.6	2.4	2	2.2	1.6	1.6	1.2	1.4	0.9		
66°	2.5	2.1	1.9	1.6	1.7	1.3	1.1	0.8	1			
64°	2	1.7	1.4	1.2	1.3	1	0.8					
62°	1.5	1.3	1	0.9								
60°	1.2	1	0.7									
58°	0.8	0.7										
Reeving	1											
Hook	7 T											
Telescoping mode	I	3	4	3	4	3	4	3	4	3	4	
	II	3	4	3	4	3	4	3	4	3	4	
	III	3	4	3	4	3	4	3	4	3	4	
	IV	3	4	3	4	3	4	3	4	3	4	
	V	3	4	3	4	3	4	3	4	3	4	

Table 14 Unit: Metric tons

Outriggers intermediately extended, with 32 tons counterweight, over full range												
Jib length Boom length Angle	11m				18.6m				26.6m			
	58.5m		63m		58.5m		63m		58.5m		63m	
	0°	30°	0°	30°	0°	30°	0°	30°	0°	30°	0°	30°
82°	6	4.5	5.5	4	4.5	2.5	4	2	2.5	2.2		
80°	6	4.2	5.5	4	4.2	2.4	3.8	2	2.4	2.1		
78°	6	4.1	5.5	4	4	2.3	3.6	2	2.3	2		
76°	5.8	4	5.2	3.8	3.7	2.2	3.3	1.9	2.2	1.9		
74°	5.6	3.9	4.8	3.6	3.5	2.1	3	1.9	2.1	1.8		
72°	5.2	3.8	4.4	3.5	3.2	2	2.8	1.8	2	1.7		
70°	4.8	3.7	4.2	3.4	3	1.9	2.6	1.8	1.8	1.6		
68°	4.5	3.6	4	3.3	2.8	1.8	2.4	1.7	1.7	1.4		
66°	4.2	3.5	3.7	3.1	2.6	1.8	2.3	1.6	1.5	1.3		
64°	3.9	3.4	3.2	2.9	2.5	1.7	2.2	1.6	1.4	1.2		
62°	3.4	3.1	2.7	2.5	2.3	1.7	1.9	1.5	1.3	1.1		
60°	3	2.7	2.4	2.1	2.1	1.6	1.6	1.3	1.2	1		
58°	2.6	2.4	2	1.8	1.8	1.5	1.3	1.1	1.1	0.7		
56°	2.3	2.1	1.7	1.5	1.5	1.3	1	0.8	0.9			
54°	2	1.8	1.4	1.3	1.2	1	0.7		0.7			
52°	1.7	1.5	1.1	1	1	0.8						
50°	1.4	1.3	0.9	0.8								
48°	1.2	1.1	0.7									
46°	1	0.9										
44°	0.8	0.7										
Reeving	1											
Hook	7 T											
Telescoping mode	I	3	4	3	4	3	4	3	4	3	4	
	II	3	4	3	4	3	4	3	4	3	4	
	III	3	4	3	4	3	4	3	4	3	4	
	IV	3	4	3	4	3	4	3	4	3	4	
	V	3	4	3	4	3	4	3	4	3	4	

Table 15 Unit: Metric tons

Outriggers intermediately extended, with 28 tons counterweight, over full range												
Jib length Boom length Angle	11m				18.6m				26.6m			
	58.5m		63m		58.5m		63m		58.5m		63m	
	0°	30°	0°	30°	0°	30°	0°	30°	0°	30°	0°	30°
82°	6	4.5	5.5	4	4.5	2.5	4	2	2.5	2.2		
80°	6	4.2	5.5	4	4.2	2.4	3.8	2	2.4	2.1		
78°	6	4.1	5.5	4	4	2.3	3.6	2	2.3	2		
76°	5.8	4	5.2	3.8	3.7	2.2	3.3	1.9	2.2	1.9		
74°	5.6	3.9	4.8	3.6	3.5	2.1	3	1.9	2.1	1.8		
72°	5.2	3.8	4.4	3.5	3.2	2	2.8	1.8	2	1.7		
70°	4.8	3.7	4.2	3.4	3	1.9	2.6	1.8	1.8	1.6		
68°	4.5	3.6	3.7	3.3	2.8	1.8	2.4	1.7	1.7	1.4		
66°	4	3.5	3.2	2.8	2.6	1.8	2.3	1.6	1.5	1.3		
64°	3.4	3	2.7	2.4	2.4	1.7	1.9	1.5	1.4	1.2		
62°	3	2.6	2.3	2.1	2.1	1.7	1.5	1.3	1.3	0.9		
60°	2.5	2.3	2	1.7	1.7	1.4	1.2	1	1.1	0.7		
58°	2.2	2	1.6	1.4	1.4	1.2	0.9	0.7	0.8			
56°	1.8	1.7	1.3	1.1	1.1	0.9	0.7					
54°	1.5	1.4	1	0.9	0.9	0.7						
52°	1.2	1.1	0.8	0.7								
50°	1	0.9										
48°	0.8	0.7										
Reeving	1											
Hook	7 T											
Telescoping mode	I	3	4	3	4	3	4	3	4	3	4	
	II	3	4	3	4	3	4	3	4	3	4	
	III	3	4	3	4	3	4	3	4	3	4	
	IV	3	4	3	4	3	4	3	4	3	4	
	V	3	4	3	4	3	4	3	4	3	4	

Table 16 Unit: Metric tons

Outriggers intermediately extended, with 20 tons counterweight, over full range												
Jib length Boom length Angle	11m				18.6m				26.6m			
	58.5m		63m		58.5m		63m		58.5m		63m	
	0°	30°	0°	30°	0°	30°	0°	30°	0°	30°	0°	30°
82°	6	4.5	5.5	4	4.5	2.5	4	2	2.5	2.2		
80°	6	4.2	5.5	4	4.2	2.4	3.8	2	2.4	2.1		
78°	6	4.1	5.5	4	4	2.3	3.6	2	2.3	2		
76°	5.8	4	5.2	3.8	3.7	2.2	3.3	1.9	2.2	1.9		
74°	5.5	3.9	4.7	3.6	3.5	2.1	3	1.9	2.1	1.8		
72°	4.9	3.8	4	3.4	3.2	2	2.8	1.8	2	1.7		
70°	4.2	3.5	3.4	2.9	3	1.9	2.4	1.7	1.8	1.5		
68°	3.5	3	2.8	2.4	2.5	1.8	1.9	1.5	1.7	1.2		
66°	3	2.5	2.3	2	2	1.6	1.5	1.1	1.3	0.9		
64°	2.4	2.1	1.8	1.6	1.6	1.3	1.1	0.8	1			
62°	2	1.7	1.4	1.2	1.2	1	0.8	0.7				
60°	1.6	1.4	1.1	0.9	0.9	0.7						
58°	1.2	1.1	0.7									
56°	0.9	0.8										
Reeving	1											
Hook	7 T											
Telescoping mode	I	3	4	3	4	3	4	3	4	3	4	
	II	3	4	3	4	3	4	3	4	3	4	
	III	3	4	3	4	3	4	3	4	3	4	
	IV	3	4	3	4	3	4	3	4	3	4	
	V	3	4	3	4	3	4	3	4	3	4	

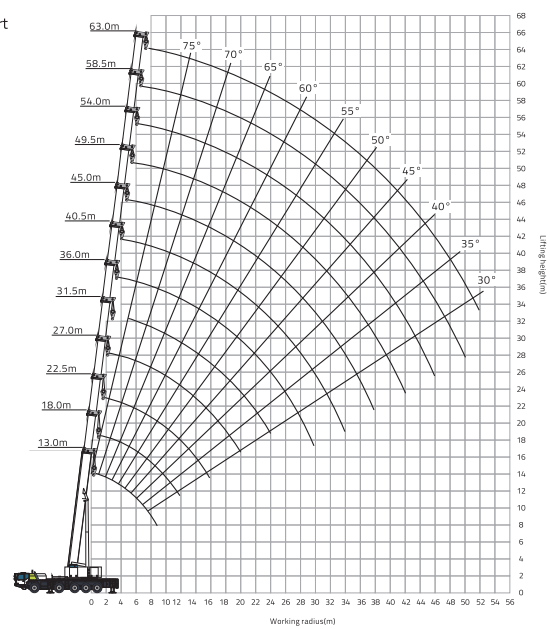
Unit: Metric tons

Note: While lifting at the point marked with "*", 70T hook is needed.

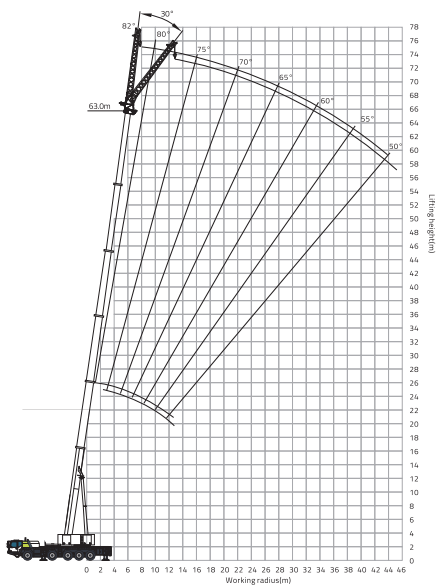
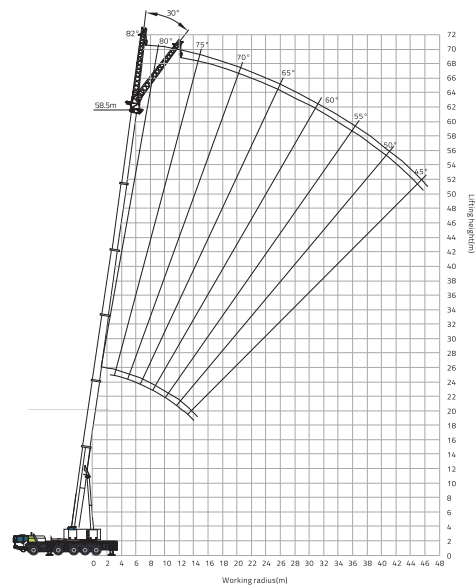
Note: While lifting at the point marked with "*", 70T hook is needed

2.4 Lifting height chart

2.4.1 Main boom lifting height chart

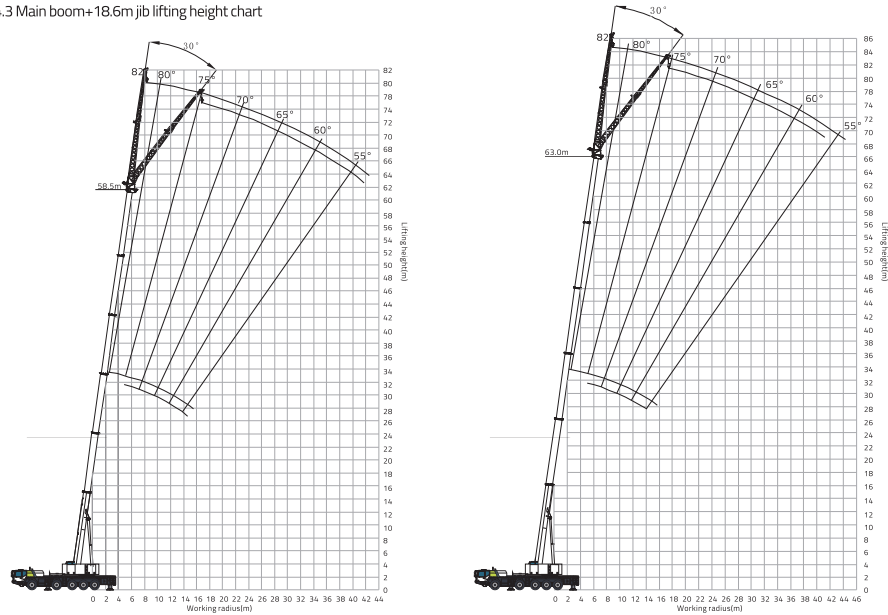


2.4.2 Main boom+11m jib lifting height chart

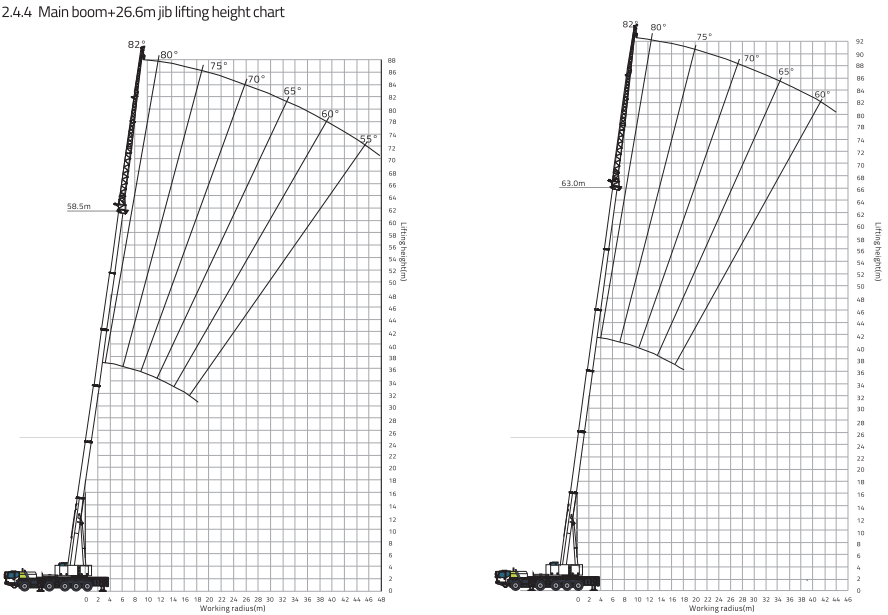


2.4 Lifting height chart

2.4.3 Main boom+18.6m jib lifting height chart

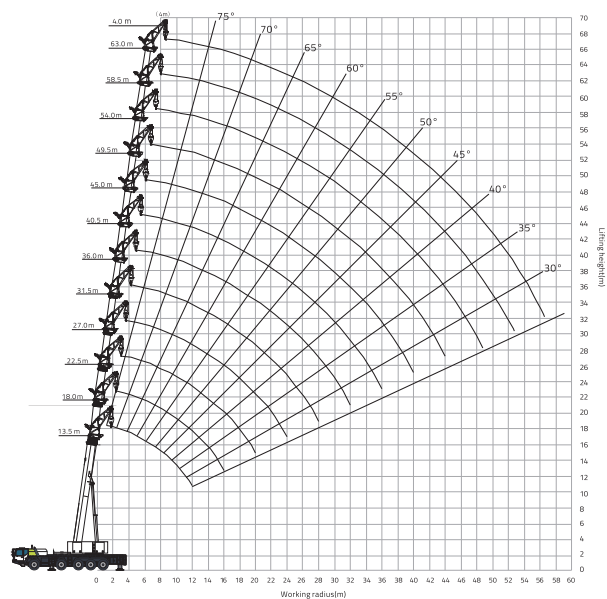


2.4.4 Main boom+26.6m jib lifting height chart



2.4 Lifting height chart

2.4.5 Main boom+ goose-head jib lifting height chart



2.5 Overall dimension in driving condition

