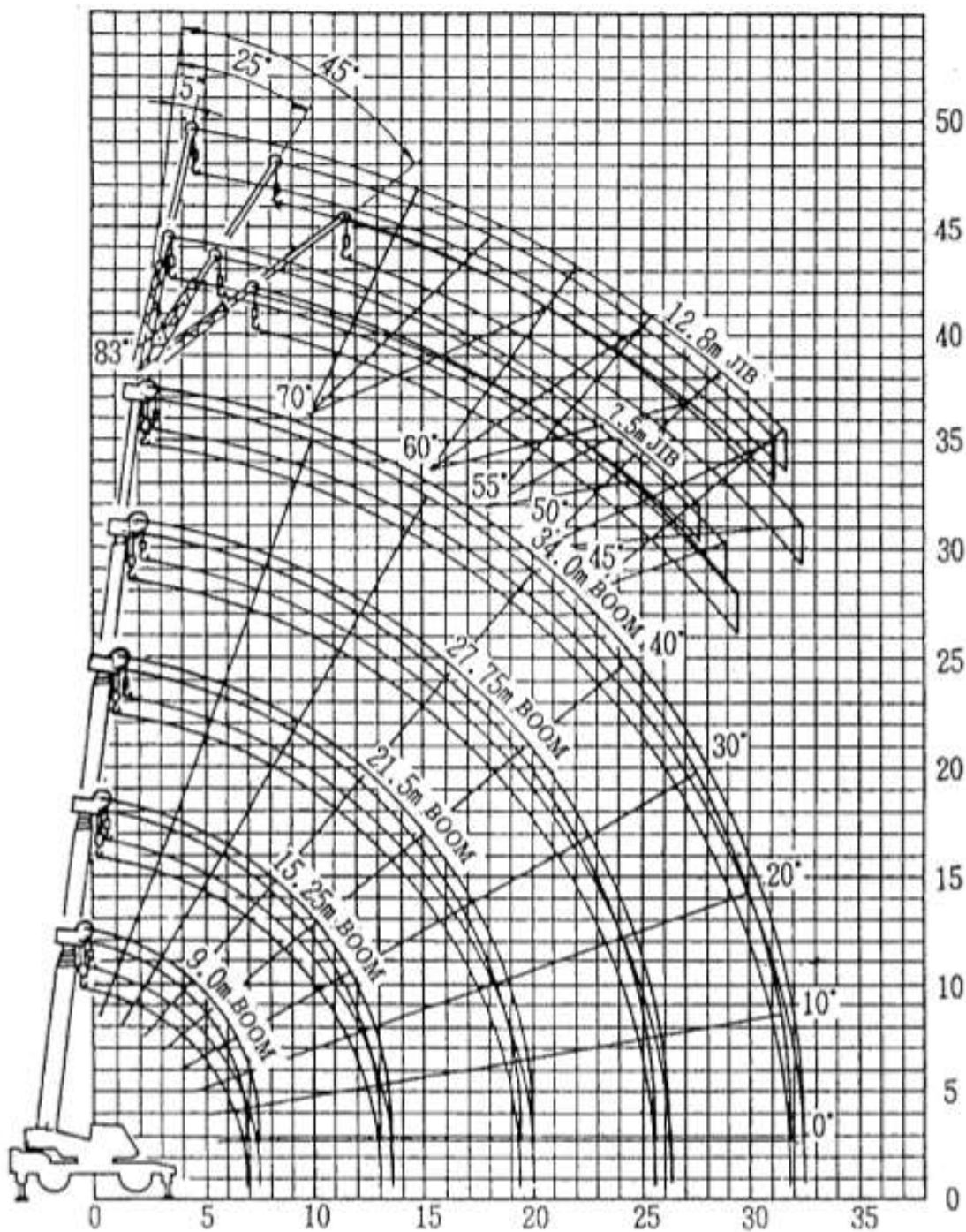


TADANO TR – 350 M



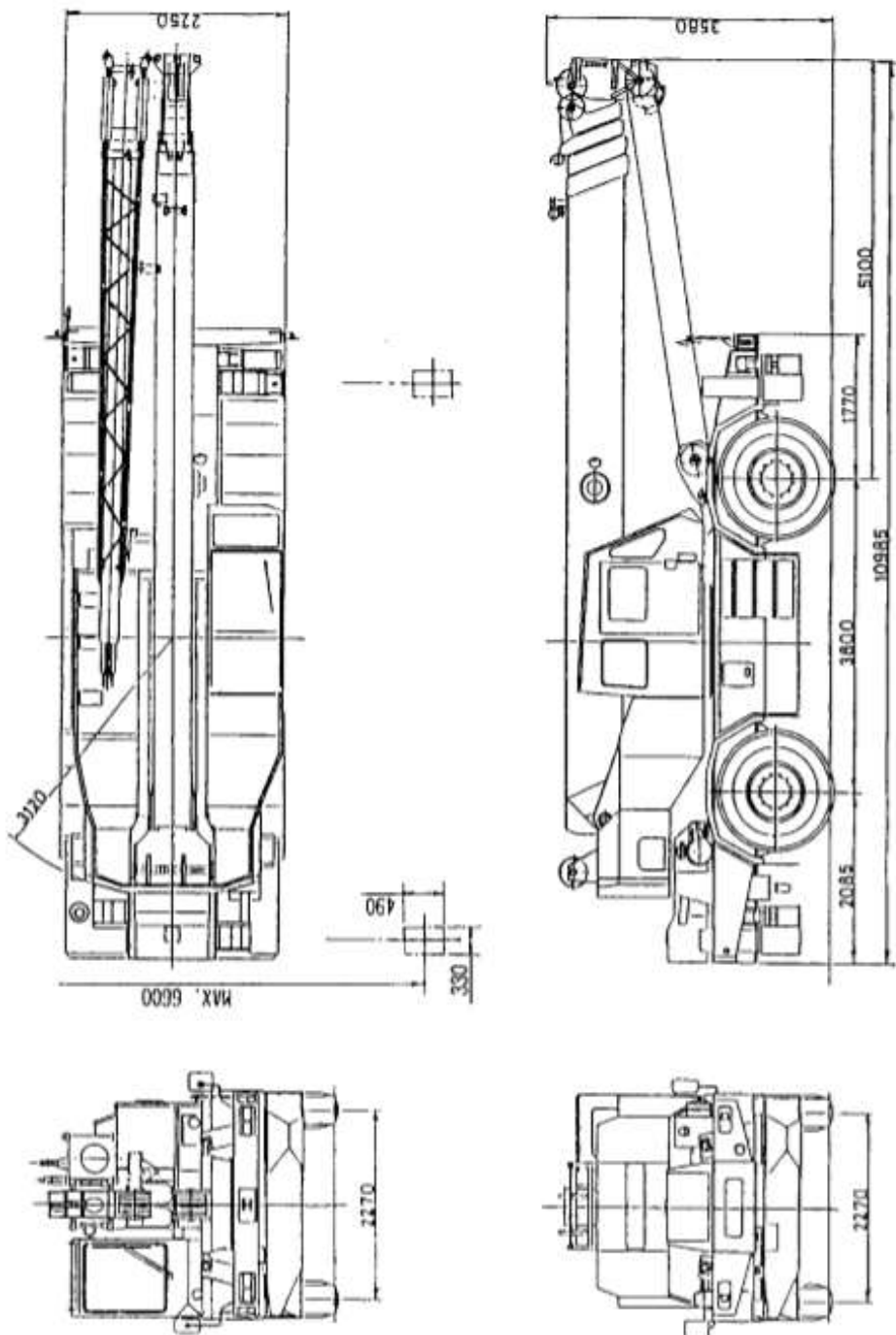
NO. ECO	G0011	FUNDA DE PLUMA	9
MODELO	TADANO TR-350	EXTENSION 1	6.25
TIPO	TERRENO AGRESTE	EXTENSION 2	6.25
CAPACIDAD	40 TONELADAS	EXTENSION 3	6.25
AÑO	1987	EXTENSION 4	6.25
SERIE Y PLACAS	505107 / KX-03-275	PESO	29.45
PLUMA BASICA	34	LARGO	10.98
AGUILON	13	ANCHO	2.75
ALCANCE TOTAL	47	ALTO	3.58
EJES	2	ESTABILIZADORES	6.6

TADANO TR – 350 M



TADANO TR – 350 M

DIMENSIONS (1/100)



TADANO TR – 350 M

TOTAL RATED LOADS

(1) With outriggers set (360°)

(i)

Unit:ton

Outriggers fully extended													
A B (°)	9.0m	15.25m	21.5m	27.75m	34.0m	C D		7.5m			12.8m		
						E (°)	5°	25°	45°	5°	25°	45°	
3.0	35.0	22.5				83	3.0	1.8	1.3	2.0	1.05	0.7	
3.5	30.0	22.5	15.5			78	3.0	1.8	1.3	2.0	1.05	0.7	
4.0	26.2	21.5	15.5	10.0		75	2.55	1.8	1.3	1.65	1.05	0.7	
4.5	23.3	20.0	15.5	10.0		72	2.2	1.65	1.3	1.4	0.95	0.7	
5.0	21.0	18.6	14.4	10.0	6.5	70	2.0	1.55	1.3	1.25	0.9	0.7	
5.5	19.0	17.5	13.5	10.0	6.5	65	1.65	1.3	1.15	1.0	0.75	0.65	
6.0	17.5	16.4	12.7	10.0	6.5	60	1.35	1.1	1.0	0.85	0.65	0.6	
6.5	16.0	15.5	12.0	9.4	6.5	55	1.15	0.95	0.9	0.7	0.55	0.55	
7.0		14.6	11.3	8.9	6.5	50	0.9	0.8	0.75	0.6	0.5	0.5	
8.0		12.3	10.1	8.0	6.4	45	0.55	0.5	0.45	0.4			
9.0		10.0	9.0	7.3	5.8								
10.0		8.2	8.0	6.7	5.3								
11.0		6.75	6.7	6.2	4.8								
12.0		5.7	5.7	5.7	4.4								
13.0		4.85	4.85	5.2	4.1								
14.0			4.15	4.6	3.8								
15.0			3.55	4.05	3.5								
16.0			3.05	3.6	3.3								
17.0			2.6	3.2	3.1								
18.0			2.2	2.8	2.9								
19.0			1.9	2.45	2.65								
20.0				2.15	2.4								
22.0				1.65	2.0								
24.0				1.25	1.6								
26.0					1.25								
28.0					0.95								
30.0					0.7								
31.5					0.5								

- A = Boom length
- B = Working radius
- C = Jib length
- D = Jib offset
- E = Boom angle

TADANO TR – 350 M

(ii)

Unit:ton

Outriggers middle extended												
A B (°)	9.0m	15.25m	21.5m	27.75m	34.0m	C D E (°)	7.5m			12.8m		
							5°	25°	45°	5°	25°	45°
3.0	35.0	22.5				83	3.0	1.8	1.3	2.0	1.05	0.7
3.5	30.0	22.5	15.5			78	3.0	1.8	1.3	2.0	1.05	0.7
4.0	26.2	21.5	15.5	10.0		75	2.55	1.8	1.3	1.65	1.05	0.7
4.5	23.3	20.0	15.5	10.0		72	2.2	1.65	1.3	1.4	0.95	0.7
5.0	21.0	18.6	14.4	10.0	6.5	70	2.0	1.55	1.3	1.25	0.9	0.7
5.5	18.0	17.5	13.5	10.0	6.5	65	1.65	1.3	1.15	1.0	0.75	0.65
6.0	15.2	14.7	12.7	10.0	6.5	60	1.05	0.95	0.9	0.85	0.65	0.6
6.5	12.9	12.7	12.0	9.4	6.5	55	0.55	0.5	0.45	0.45		
7.0		11.0	11.0	8.9	6.5							
8.0		8.5	8.5	8.0	6.4							
9.0		6.8	6.8	7.3	5.8							
10.0		5.5	5.5	6.3	5.3							
11.0		4.55	4.55	5.3	4.8							
12.0		3.85	3.85	4.5	4.4							
13.0		3.15	3.15	3.8	4.05							
14.0			2.6	3.2	3.5							
15.0			2.1	2.7	3.05							
16.0			1.7	2.3	2.7							
17.0			1.35	1.95	2.35							
18.0			1.1	1.65	2.05							
19.0			0.8	1.4	1.75							
20.0				1.15	1.5							
22.0				0.7	1.05							
24.0					0.7							

A = Boom length
 B = Working radius
 C = Jib length
 D = Jib offset
 E = Boom angle

TADANO TR – 350 M

(iii)

Unit:ton

Outriggers minimum extended												
A B (°)	9.0m	15.25m	21.5m	27.75m	34.0m	C D E (°)	7.5m			12.8m		
							5°	25°	45°	5°	25°	45°
3.0	35.0	22.5				83	3.0	1.8	1.3	2.0	1.05	0.7
3.5	24.5	22.5	15.5			78	3.0	1.8	1.3	2.0	1.05	0.7
4.0	18.7	18.6	15.5	10.0		75	2.55	1.8	1.3	1.65	1.05	0.7
4.5	15.0	14.9	14.8	10.0		72	2.1	1.65	1.3	1.4	0.95	0.7
5.0	12.4	12.3	12.3	10.0	6.5	70	1.6	1.3	1.2	1.25	0.9	0.7
5.5	10.4	10.3	10.3	10.0	6.5							
6.0	8.9	8.9	8.9	9.0	6.5							
6.5	7.7	7.7	7.7	8.0	6.5							
7.0		6.6	6.6	7.2	6.5							
8.0		5.1	5.1	5.7	6.0							
9.0		4.0	4.0	4.6	5.0							
10.0		3.2	3.2	3.7	4.1							
11.0		2.5	2.5	3.05	3.4							
12.0		1.95	1.95	2.5	2.85							
13.0		1.5	1.45	2.05	2.4							
14.0			1.05	1.65	2.0							
15.0			0.7	1.3	1.65							
16.0				1.0	1.35							
17.0				0.75	1.1							
18.0					0.9							

TADANO TR – 350 M

(2) Without outriggers

Unit:ton

B (m)	Stationary						Creep (travelling at 1.6km/h or less)					
	9.0m BOOM		15.25m BOOM		21.5m BOOM		9.0m BOOM		15.25m BOOM		21.5m BOOM	
	F	G	F	G	F	G	F	G	F	G	F	G
3.0	15.0	9.0	12.0	7.2			11.0	6.7	9.0	5.0		
3.5	15.0	7.6	12.0	7.2	8.0		11.0	5.8	9.0	5.0	6.0	3.3
4.0	13.5	6.3	12.0	6.1	8.0	4.5	10.0	5.0	9.0	4.5	6.0	3.3
4.5	12.1	5.3	11.1	5.25	8.0	4.5	9.0	4.3	8.3	4.0	6.0	3.3
5.0	10.9	4.55	10.15	4.55	8.0	4.5	8.0	3.8	7.65	3.65	6.0	3.3
5.5	9.8	3.9	9.35	3.9	7.5	3.85	7.3	3.3	7.0	3.3	5.75	3.25
6.0	8.9	3.4	8.6	3.4	7.0	3.3	6.6	2.85	6.4	2.85	5.5	2.75
6.5	8.0	2.9	7.8	2.9	6.5	2.8	6.0	2.45	5.9	2.45	5.25	2.35
7.0			7.1	2.45	6.0	2.35			5.5	2.05	5.0	1.95
8.0			5.7	1.7	5.1	1.6			4.8	1.4	4.3	1.35
9.0			4.55	1.1	4.3	1.05			3.85	0.9	3.6	0.85
10.0			3.65		3.5				3.1		2.95	
11.0			2.9		2.9				2.45		2.45	
12.0			2.35		2.3				2.0		1.95	
13.0			1.95		1.85				1.65		1.55	
14.0					1.4						1.15	
15.0					1.05						0.85	
16.0					0.8						0.65	
17.0					0.55							

B = Working radius F = Front G = 360°